

Air purifier WDH-AP1101



Dear customer,

You have chosen a high quality product. So that you have much joy with this product, here are a few hints:

In case of any problems:

We hope the device meets your expectations ! Should there be any reason for a complaint despite the greatest possible care, we ask you to contact us briefly, as we are very interested in your satisfaction and we would like to clear up any misunderstanding.

Equipment and quality features:

Prefilter: The cleanable prefilter (filter grid) removes all larger particles such as hair and lint and thus ensures a longer service life of the HEPA filter.

HEPA Filter: One of the best filters ever, this brand filter catches and filters particles up to 0.0003mm in size. These include pollen, germs, mold spores and dust with a purity rate of 99.97% !!

Activated Carbon Filter: Absorbs and cleans many types of smoke and odours (e.g. cigarette smoke) and also helps to break down toxic fumes, gases and solvents.

Catalyst Filter: Degrades up to 90% of toxic vapors, gases and solvents (e.g. formaldehyde, benzene, ammonia, sulphur, etc.)

Air sensor (optional switchable): Automatically measures air quality. If the determined air quality is very good, the air purifier automatically switches to a very weak operating level (Low). If the result is opposite and the air quality is poor, the operating strength is automatically adjusted (medium, high or turbo).

5 speed levels: Turbo (very strong / approx. 600 m³/h), High (strong / approx. 330 m³/h), Medium (medium / approx. 260 m³/h), Low (weak / approx. 190 m³/h) and Silent (very weak / approx. 170 m³/h)

Display: The air purifier has a modern and very clear display, so you always have a quick overview of all the settings.

Remote control: Includes a modern remote control with which almost all functions can be conveniently controlled.

Important safety instructions:

- Operate the device only in a straight position and with a straight/even stand !
- Ensure a minimum lateral distance of 50 cm and a minimum rear distance of 10 cm to the inventory and walls !
- Do not place any objects on the unit and ensure that the air intake and exhaust air are always free !
- The appliance does not replace room ventilation and is not suitable as a cooker hood when cooking.
- Supervise the air purifier when there are children or animals near the unit !
- This air purifier should only be operated by persons who have the necessary physical and mental abilities to operate this device without problems !
- Do not insert any objects into or onto the appliance !
- Only qualified personnel or electricians are permitted to open the device !
- Protect the device from all moisture and wetness !
- Only use the recommended voltage for the operation of the device !
- Make sure that the power cord is unfolded (untied) before connecting it to the power outlet !
- Make sure that the plug is clean and properly connected to the socket before starting the appliance !
- Do not expose the filters to insect spray, as they may release the insect spray unintentionally later !
- Switch the appliance off and unplug the appliance from the wall outlet before cleaning !
- Clean the device only with mild detergents !
- Avoid using the device at high room temperatures or under humid conditions !
- Do not make any independent changes to the device or the cables !
- Never reach near the plug or socket with wet hands !
- Make sure that there are never easily flammable substances (e.g. gases/oils etc.) in the vicinity of the device !
- If you do not use the device for a longer period of time, switch it off and unplug it from the mains !

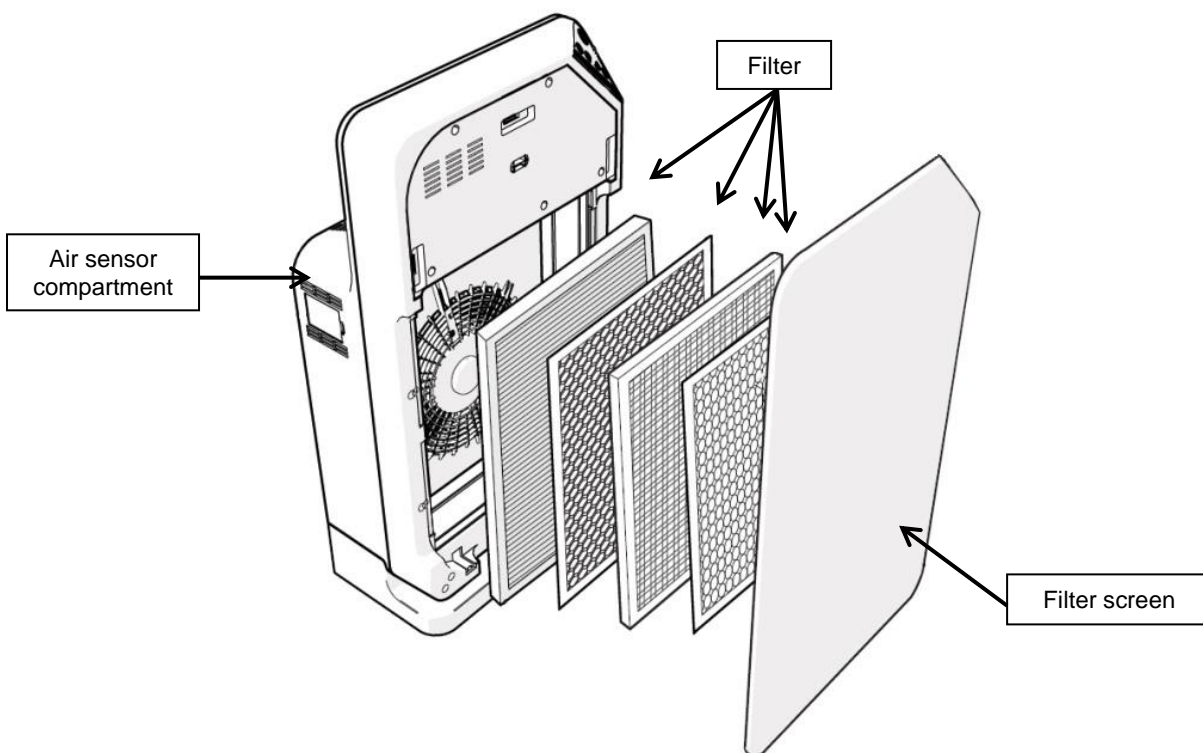
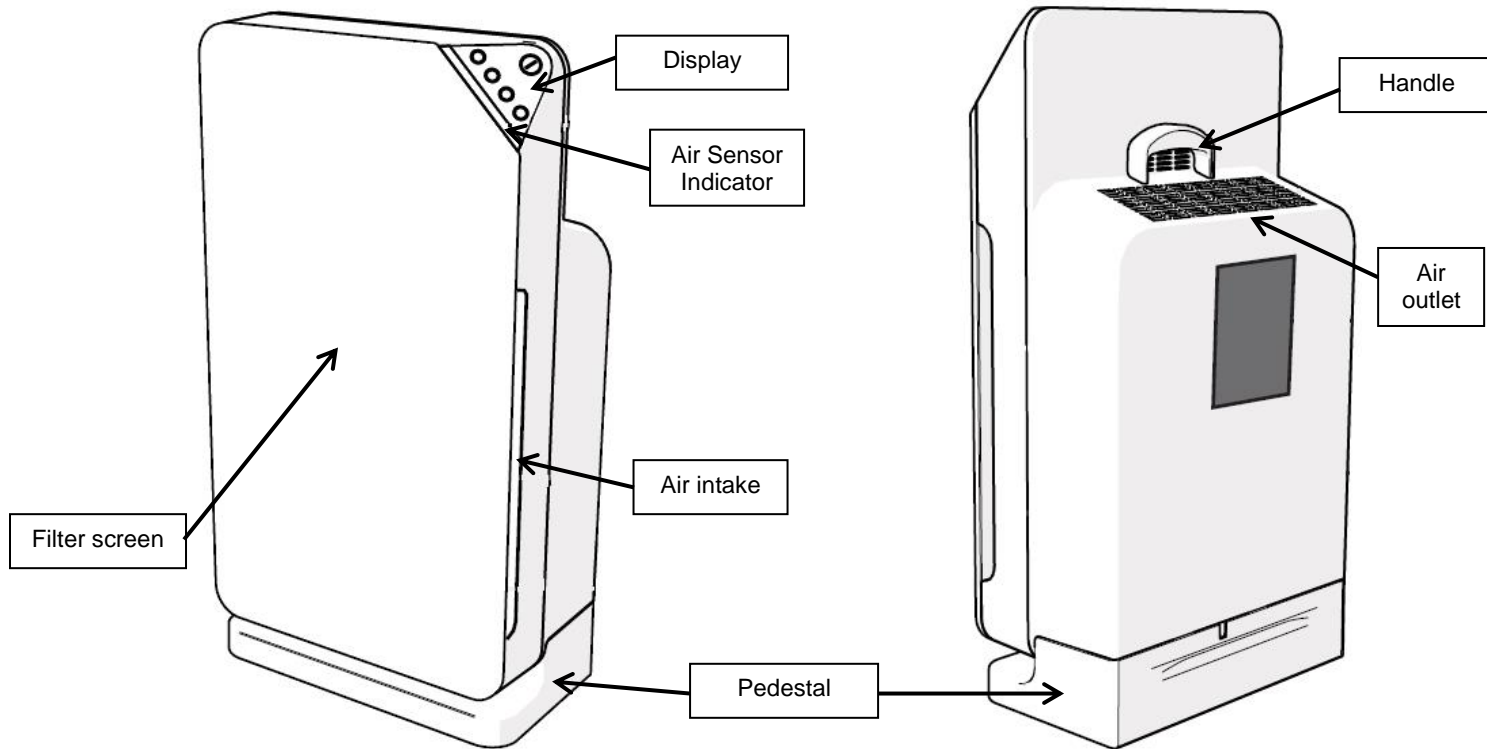
Please switch off the device immediately and disconnect it from the power supply if something seems to be wrong !! In this case, please contact a specialist and do not attempt to repair the device yourself !!

Examples: Fuse has jumped out or the device makes unusual noises and/or smells burnt.

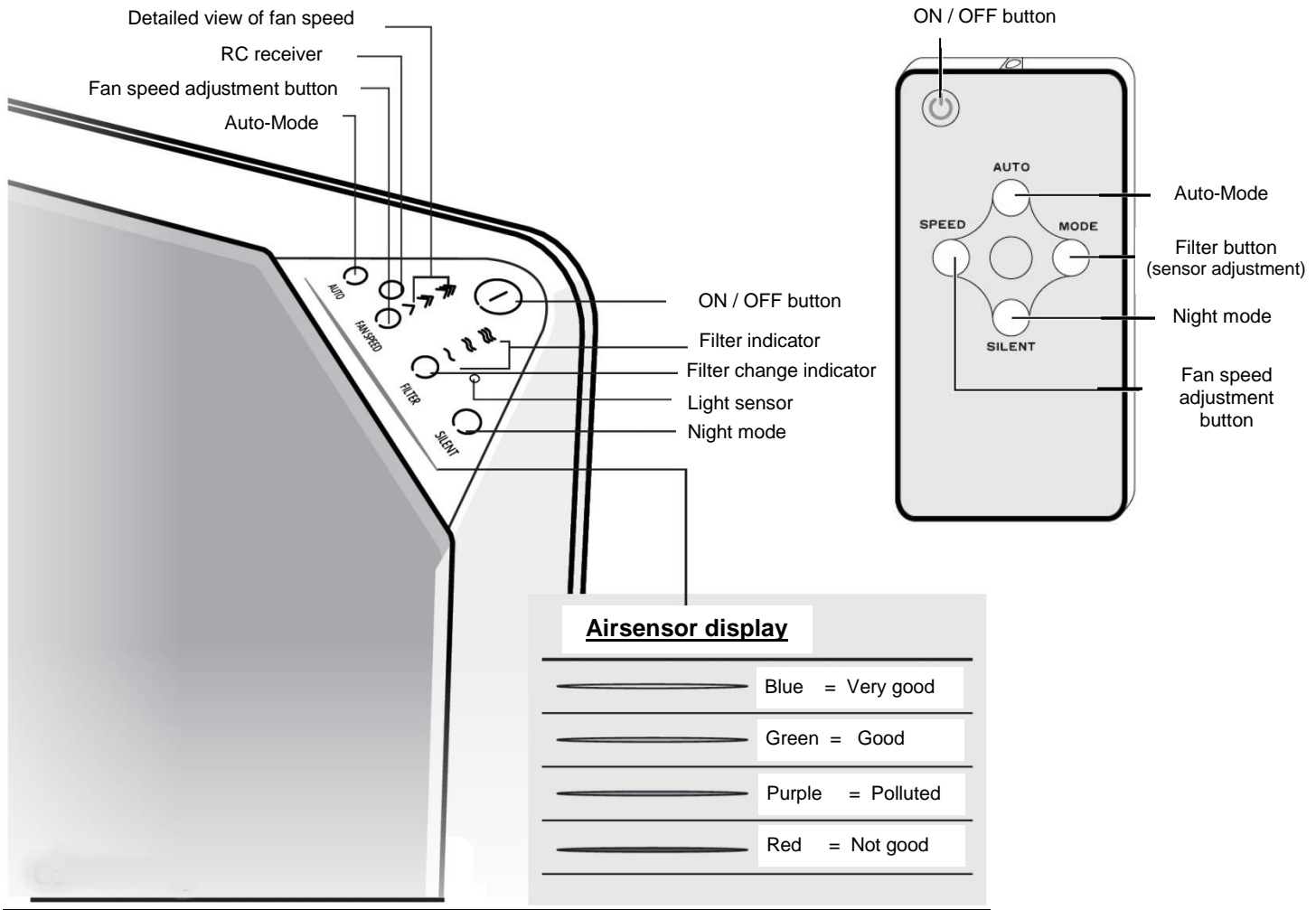
Device description:

Front side

Back side



Overview display & remote control:

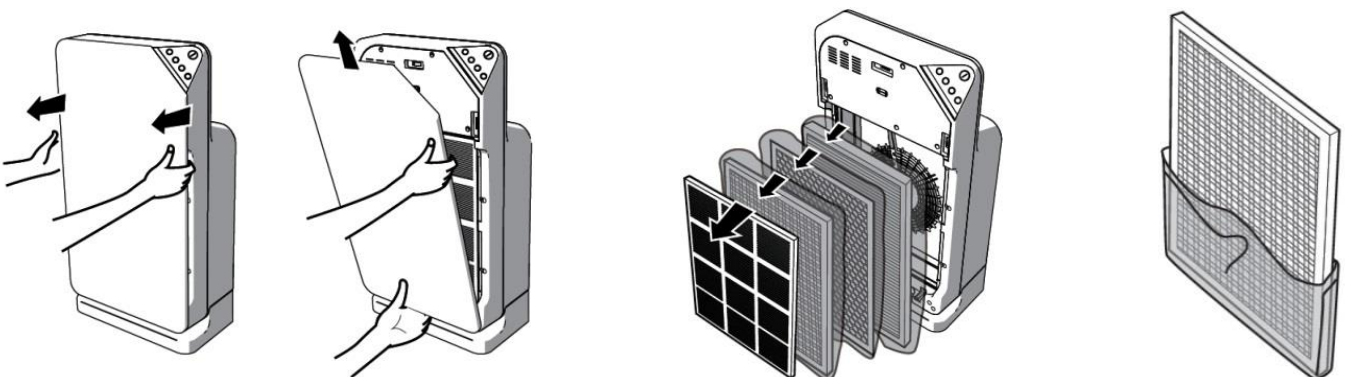


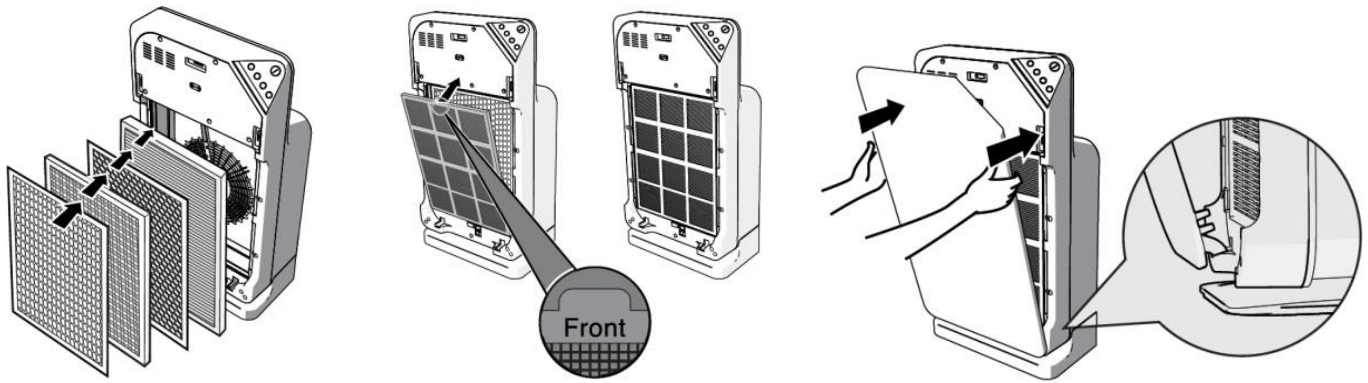
Instruction Manual:

1.) Preparation and installation of filters

The air purifier is factory equipped with all filters. First open the front filter screen by reaching into the side ventilation slots at the upper end and pulling the filter screen forward with a slight jerk. Now remove all filters. Remove the protective cover of the fine filters and then reinsert the filters into the unit in the correct order. When inserting the filters, make sure that the filters are inserted correctly so that the tab with the inscription "Front" always points forwards/outwards ! Finally, the prefilter is inserted. Make sure that all holders are properly seated in the holding pockets. Finally the front panel is inserted again and closed.

See following diagrams / pictures:

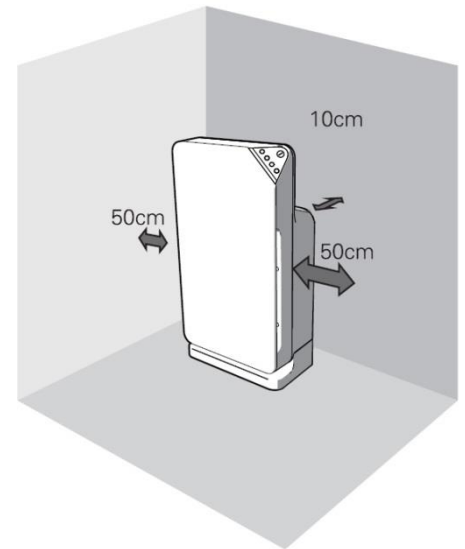




2.) The right location

Place the air purifier under the following aspects:

- Central in order to achieve the highest possible effectiveness.
- Near possible sources of dirt (windows, doors, pets, smokers)
- With a minimum distance to the side of 50 cm and to the rear of 10 cm (See adjacent diagram.)



3.) Power connection

Insert the plug into the socket and wait for the LED to light up briefly.

4.) Switching on the air purifier

Press the ON / OFF button. The air filter acknowledges the command with a short beep, the LED display switches on and the air purifier starts operating. The standard operating mode is the air sensor mode (Auto mode).

5.) Adjustment of the various operating strengths

Manual operation:

Press the "FAN SPEED" button and select your desired power level by pressing it repeatedly. (See the following diagram)



Low



Medium



High



Turbo

Fan speed





Night mode (Silent Mode):

Press the "SILENT" button and the air purifier switches off the display of the fan speed and switches to particularly low-noise operation with very weak air circulation.

6.) Air sensor mode (Auto Mode)

Press the "AUTO" button. The air sensor switches on and automatically starts measuring the air quality. There are 4 possible results of the determined air quality (see diagram below):

Please note that the correct air sensor function is only available after one minute !

Air sensor display	Blue	Green	Purple	Red
Air-quality	Very good	Good	Polluted	Not good
				
Fan speed	Low	Medium	High	Turbo

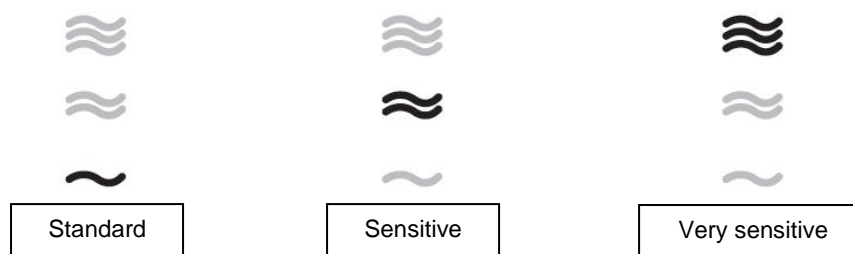
If the determined air quality is "very good", the air purifier automatically switches to a weak fan speed. If the result is opposite and the air quality is poor, the air purifier switches to a higher fan speed (medium, high or turbo).

Adjustment of the air sensor

The air sensor is located on the side in a small compartment and reacts to particles in the air, thus always reflecting only one air quality trend. As it is a trend (similar to a weather station), this function cannot provide a 100% reliable statement about pollutants in the room air or over the entire area of a room.

In addition, there may occasionally be greater fluctuations in operation (jump from red to green and vice versa) as the air sensor reacts to particles and volatile organic compounds (VOCs) in the room and is also exposed to draughts.

To adjust the air sensor, press the "FILTER" button for approx. 3 seconds. This causes the wave display above the "FILTER" key to start flashing. By repeatedly pressing the "FILTER" key, you can now change the sensitivity of the air sensor (see diagram below):

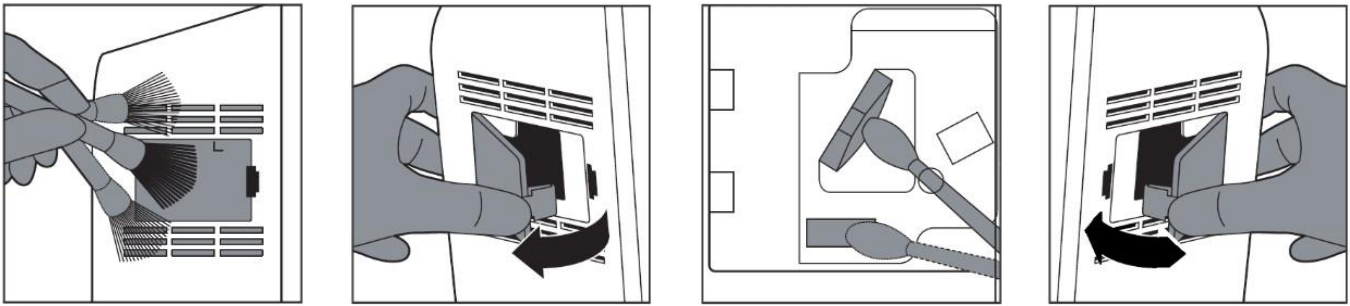


To quit the air sensor adjustment, wait approx. 10 seconds and the settings made will be saved.

To ensure that the new settings are accepted correctly, it is necessary to switch the unit off and on again !

Cleaning the air sensor

We recommend that you clean the air sensor approx. every two months to ensure trouble-free air sensor operation (Auto Mode). First use a soft brush to clean the air slots above and below the air sensor compartment. Then open the air sensor compartment. Now clean all areas of the black plastic box. Please use a soft (damp) cotton swab for this purpose in order to clean the inlet, outlet, and sensor, and a dry cotton swab to remove any water residue from the sensor. Finally, close the air sensor compartment again. (See diagrams below.)



Light sensor

The air purifier is equipped with a light sensor on the control panel. The light sensor is only activated in the operating mode "Air sensor operation" (Auto Mode). If the air purifier is in the dark for three minutes (night), the LED display is automatically dimmed and the unit switches to night mode (weak air circulation). If the unit is again in a bright environment (day), the air purifier restarts its normal air sensor operation (Auto Mode)

7.) Filter change / Filter change indicator

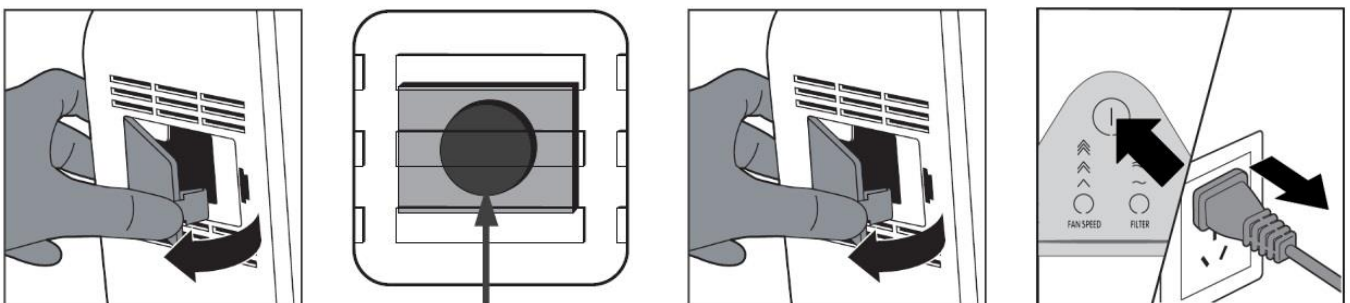
The unit is equipped with a filter change indicator. Depending on the duration of use and the degree of contamination, this may be indicated by a beep every 30 minutes and a red light on the "FILTER" button ! This indicates that the prefilter should be cleaned and/or the fine filters replaced.

Notification: Disconnect the mains plug before cleaning/replacing the filters. In order to achieve optimum filter results, we strongly recommend that you only use original filters from the manufacturer.

After the filter change indicator lights up, there are still 24 operating hours available, then the unit switches off the filter operation automatically for safety and efficiency reasons.

After the prefilter has been cleaned and/or the fine filters have been replaced, it is necessary to press the reset button ! The reset button for the filters is located in the air sensor compartment. Open the air sensor compartment, then press the reset button for approx. 3-5 seconds until you hear a short "click". Then close the air sensor compartment again. Please note that the air purifier must be switched on for resetting! Finally, the air purifier should be switched off and briefly disconnected from the power supply (pull the mains plug). Your air purifier is then fully operational again !

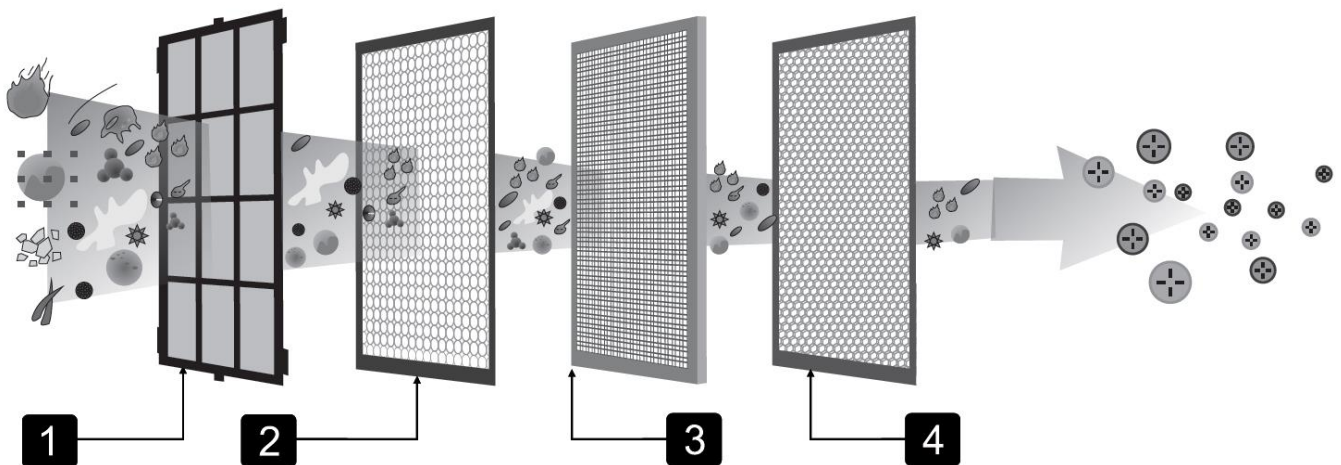
See following diagrams / pictures:



8.) Additional

The air purifier can be controlled and adjusted both via the LCD display and via the remote control. A button cell CR2032 (3V) is required to operate the remote control.

The filters (diagram):



In order to achieve optimal filter results, we recommend the following filter sequence:

1. Prefilter
2. HEPA-Filter
3. Activated carbon filter
4. Catalyst filter

Notes for the filters:

1. With an average use of approx. 8 hours daily, the filters last up to one year ! In more dirty rooms, e.g. smoking households, the filters may have to be replaced after approx. 4 - 6 months (at the latest when the HEPA filter is dark brown, it should be replaced) !
2. Never wash the fine filters. (Only the prefilter can be cleaned.)

Technical data:

Model:	WDH-AP1101
Voltage:	220V ~ 50Hz
Max. Power consumption:	37 W (0,2 A)
Max. Air circulation:	600 m ³ /h
Max. recommended room size:	60 qm (150 cbm)
Measurements (H/W/D):	645 x 337 x 190 mm
Weight:	6,5 kg

For the technical data deviations are reserved!

Troubleshooting:

The device itself emits an unpleasant odor:

A new air purifier still has a slight smell of its own (fresh plastic, new engine, new paint etc.). This new smell evaporates within shortest time (1-2 weeks) !

The air sensor causes problems:

Please read the notes under point 6 (Air Sensor Operation / Auto Mode). If the explanations listed there do not apply and the air sensor continues to cause problems (despite cleaning and/or adjustment), read the following notes:

1. Check that the unit is in night mode. If yes, make sure that the control panel and the integrated light sensor receive sufficient light.
2. Have you left the air purifier in "Auto mode" times 12 hours "free hand" or have you let it run in continuous operation ? Especially at the beginning and especially with smokers, 12 hours of continuous operation and more are quite normal, because often particles/odor patterns sit in the whole inventory (curtains, cushions, carpet etc.) and depending on the nature of the material, it can take considerable time, until this inventory gives off the odors again.
3. Please make sure that the air sensor function is not used when the air purifier is in a draught (e.g. between two open windows and/or doors).
4. In very rare cases, the air sensor may react negatively to certain substances (e.g. furniture polish, perfume, etc.) in your room. In these cases you should refrain from using the automatic air sensor operation (Auto Mode).

It takes too long for smoke and/or odours to be neutralised:

In general, our air purifier is very well suited for odour and smoke neutralization. However, please note that the result of our air purifier always depends on how many odour particles flow in and how the air circulation in your area is !

This is because the odour filters inlay absorb/remove only a part of all odour particles in a single pass. For this reason, three filter passages are given until all odour particles are absorbed.

(Note: When filtering dust and particles, one filter pass is sufficient to clean the air, as all particles are retained in the fine filter = 99% effectiveness. For odours the carbon & catalyst filter is mainly used and here the filter medium needs approx. three filter passages per sqm³ of air until one can speak of clean air = 33% effectiveness !!)

Furthermore it is to be considered also that smell patterns can already sit in the inventory (furniture) - and depending upon condition of the individual materials, it can take substantial time, until these have delivered the smells again.

(The air purifier WDH-AP1101 only eliminates odours that are circulated or filtered by it.)

The device does not respond / The device cannot be switched on:

1. Check that all filters are properly inserted and that the front filter screen is properly closed.
2. Check whether the filter change indicator lights up. If so, replace/clean the filters and then press the remaining button (see point 7 of the instruction manual).

Other:

Guarantee declaration:

Without prejudice to the statutory warranty claims, the manufacturer grants a warranty in accordance with the laws of your country, but at least 1 year (in Germany 2 years for private persons). The warranty begins on the date of sale of the device to the end user.

The warranty extends exclusively to defects which are attributable to material or manufacturing defects.

Warranty repairs may only be carried out by an authorized service center. To claim your warranty, the original sales receipt (with date of purchase) must be attached.

The following are excluded from the guarantee:

- Normal wear
- Improper use, such as overloading the device or unauthorized accessories
- Damage due to external influences, use of force or foreign objects
- Damage caused by non-observance of the operating instructions, e.g. connection to an incorrect mains voltage or non-observance of the installation instructions
- Completely or partially dismantled devices

Conformity:

The air purifier and/or parts thereof have been tested and manufactured to the following (safety) standards:

Tested by Eurofins Product Service "GS" and of course CE compliant.

Tested safety according to: EN 60335-2-65:2003+A1:2008+A11:2012
EN 60335-1:2012+A11:2014
EN 62233:2008

CE + EMC conformity tested according to: EN 55014-1:2006+A1:2009+A2:2011
EN 55014-2:1997+A1:2001+A2:2008
EN 55014-2:2015
EN 61000-3-2:2014
EN 61000-3-3:2013

Correct disposal of this product:



Within the EU, this symbol indicates that this product must not be disposed of with household waste. Old appliances contain valuable recyclable materials which should be recycled. In addition, the environment and human health should not be polluted by uncontrolled waste disposal. For this reason, please dispose of old appliances via suitable collection systems or send the appliance to the place where you purchased it for disposal. The latter will then recycle the device.

We wish you a lot of fun with this device

Aktobis AG

***Keep these instructions for use in a safe place
!***